

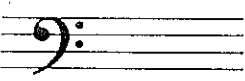



THE CLEF SIGNS

At the beginning of every staff you will find a clef sign which gives a letter name to a definite line or space.

This is a TREBLE, or G clef sign. 

The treble, or G clef sign, gives the letter name G to the second line of the staff. 

This is a BASS, or F clef sign. 



The bass, or F clef sign, gives the letter name F to the fourth line of the staff. 

In this Music Theory book we will use both the treble, or G clef sign, and the bass, or F clef sign.

STUDENT ASSIGNMENT

Date _____

Grade _____

1. Draw four treble (or G) clef signs here. 
2. Draw four bass (or F) clef signs here. 
3. The treble (or G) clef sign circles staff line number? _____
4. What is the letter name of line two in the treble clef? _____
5. In the bass (or F) clef sign, what staff line lies between the two dots? _____
6. What is the letter name of line four in the bass clef? _____

MEMORIZE: The treble, or G, clef names the second line of the staff - G.
The bass, or F, clef names the fourth line of the staff - F.

Lesson 3

LINE and SPACE NAMES

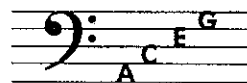
Each line and space of a staff has a letter name in relation to its clef sign.

The first seven letters of the alphabet are used in naming the lines and spaces of both clefs,
A - B - C - D - E - F - G.

The names of the four spaces in the treble clef spell F A C E.



In the bass clef they spell A C E - G.



You can remember the names of the five lines in the treble clef by "Every Good Boy Does Fine".



In the bass clef remember "Good Boys Do Fine Always".



STUDENT ASSIGNMENT

Date _____

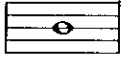
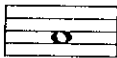
Grade _____

1. How many letters of the alphabet are used in naming the lines and spaces of a staff? _____
2. Write the letter names of the spaces in the treble clef. _____
3. Write the letter names of the lines in the bass clef. _____
4. Write the letter names of the lines in the treble clef. _____
5. Write the letter names of the spaces in the bass clef. _____
6. Write the letter names of all the lines and spaces from line one to line five on both clefs.
Treble clef _____ Bass clef _____

MEMORIZE: The letter names of the lines and spaces of both the treble clef staff and bass clef staff.

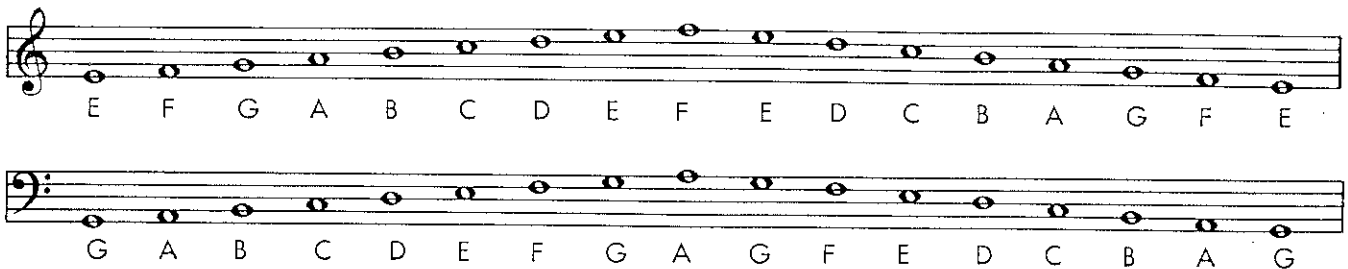
NOTATION

Notes are the symbols placed on the lines and in the spaces of the staff to make music.

This is a line whole note  a space whole note 

Treble Clef: space whole notes  line whole notes 
 F A C E E G B D F

Bass Clef: space whole notes  line whole notes 
 A C E G G B D F A



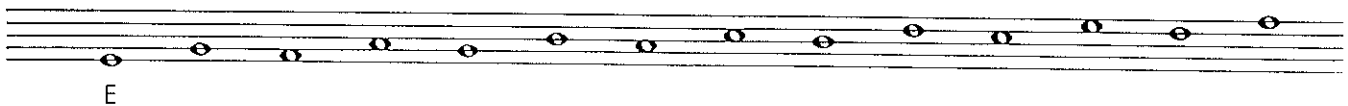
E F G A B C D E F E D C B A G F E

G A B C D E F G A G F E D C B A G

STUDENT ASSIGNMENT

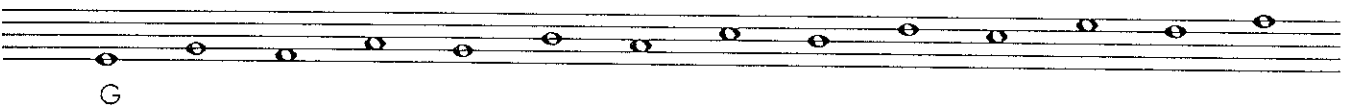
Date	_____
Grade	_____

1. Draw six line whole notes. _____
2. Draw six space whole notes. _____
3. Draw the treble clef sign and write the letter name under each whole note.



E

4. Draw the bass clef sign and write the letter name under each whole note.



G

MEMORIZE: ABCDEFG backwards GFEDCBA - say it over and over.

WHOLE - HALF - QUARTER NOTES

A whole note (●) can be changed into other kinds of notes. Add a stem to the whole note and it becomes a half note (♩). Fill in the whole note and add a stem and it becomes a quarter note (♩).

In either clef, stems go up for all notes below the third line



and stems go down for all notes on the third line or above



Stems going up are attached to the right side of all notes ♩ ♩ and stems going down are attached to the left side of all notes. ♩ ♩

STUDENT ASSIGNMENT

Date _____

Grade _____

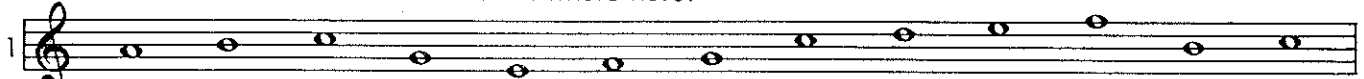
1. Draw four half notes. _____
2. Draw six quarter notes. _____
3. Which direction will the stem go for the treble clef B? _____
4. Which direction will the stem go for the bass clef C? _____

MEMORIZE: All notes below the third line - stems up! All notes on or above the third line - stems down!

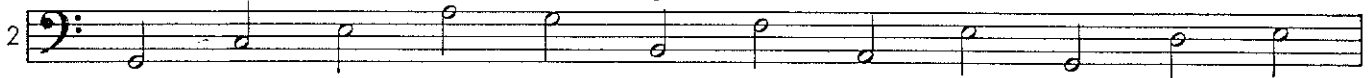
STUDENT ASSIGNMENT

Date	_____
Grade	_____

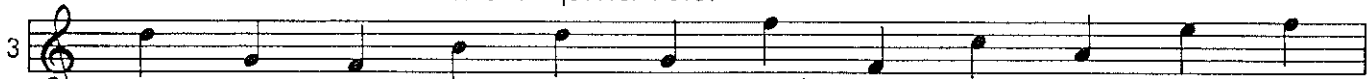
Write the letter name under each whole note.

1 
A

Write the letter name under each half note.

2 
G

Write the letter name under each quarter note.

3 
D


Write the letter name under these mixed notes. Sing - using letter names or Loo or La.

4 
A

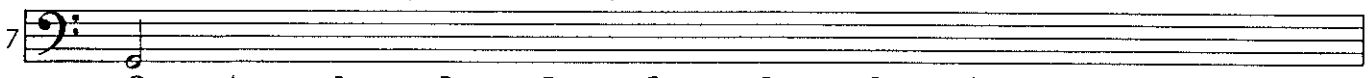
Write the letter name under these mixed notes (sing).

5 
A

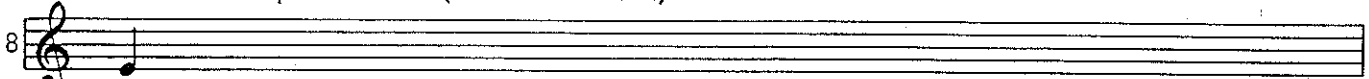
Write these whole notes

6 
G A B D F E D C E F A G

Write these half notes (watch the stems).

7 
G A B D F E D C E F A G

Write these quarter notes (watch the stems).

8 
E G B D E C A F G B D F

THE MEASURE

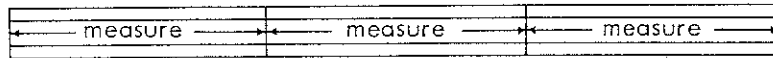
Music is divided into measures by using bar lines.

These are bar lines.



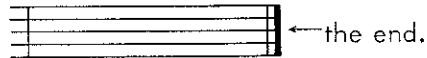
The distance between any two bar lines is called a measure.

These are measures.



When any part of the music is completed, we use a double bar.

This is a double bar indicating



STUDENT ASSIGNMENT

Date _____

Grade _____



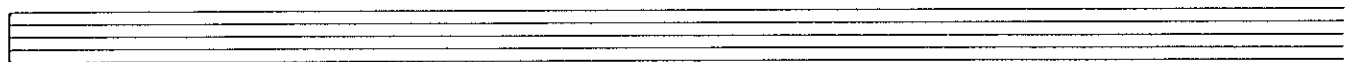
1. How many bar lines are there in the staff above? _____
2. How many measures are there in the staff above? _____
3. Draw the treble clef sign on the staff below and divide it into four equal measures.
Place a double bar at the end.



4. Below:- Draw a treble clef sign - divide the staff into eight measures.
Place a double bar at the end - place one whole note in each measure.



5. Below:- Draw a bass clef sign - divide the staff into eight measures.
Place a double bar at the end - place two half notes in each measure.

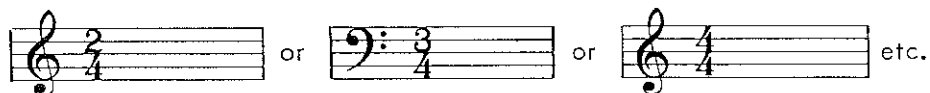


MEMORIZE: The distance between two bar lines is called a measure.

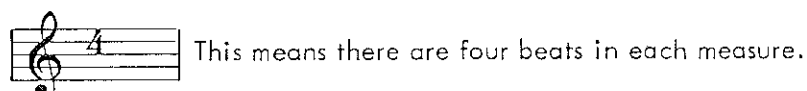
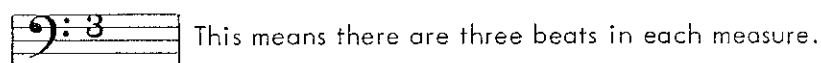
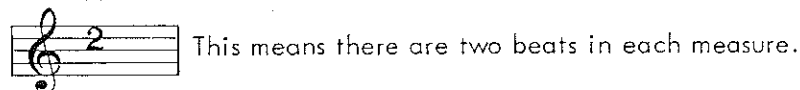
TIME SIGNATURES

At the beginning of every piece of music there is a time signature.

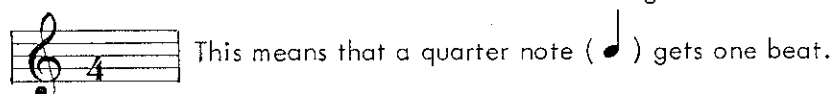
It is made up of two numbers placed one above the other like this:-



The upper number tells us the number of beats in a measure.



The lower number tells us the kind of a note that gets one beat.

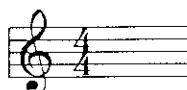


STUDENT ASSIGNMENT

Date _____

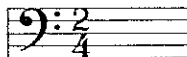
Grade _____

1. How many beats are there in each measure of



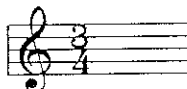
? _____

2. How many beats are there in each measure of



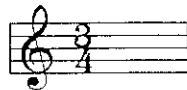
? _____

3. How many beats are there in each measure of



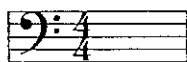
? _____

4. What note receives one beat in



? _____

5. What note receives one beat in



? _____

6. What note receives one beat in



? _____

MEMORIZE: The top number always tells the number of beats in a measure.
The bottom number always tells the kind of note that gets one beat.

NOTE VALUES

Every note in music receives a certain number of beats. The lower number in the time signature determines the value of each note.

When the lower number of the time signature is 4 the quarter note (♩) receives one beat, the half note (♭) receives two beats, and the whole note (♩) receives four beats.

The beats may be written under the notes like this:

The numbers connected by a dash apply to the same note and should be counted in a continuous sound.

STUDENT ASSIGNMENT

Date _____

Grade _____

- Practice counting the following exercise aloud while tapping each beat with your foot evenly and steadily. Don't forget about the dash between numbers.

- Write the beats under each note in the following exercise.

- Draw the missing bar lines in the following exercise and write the beats.

MEMORIZE: When the lower number of the time signature is 4,

the note values are: ♩ = 1 beat; ♭ = 2 beats; ♩ = 4 beats.

REST VALUES

For each note value in music there is an equal rest value. The time signature determines the value of each note or rest.

When the lower number of the time signature is "4", the quarter rest (♩) receives one beat, the half rest (♮) receives two beats and the whole rest (♯) receives four beats. Notice that the half rest (♮) is above the line and the whole rest (♯) is below it.

The beats may be written under the rests like this:- (R = rest)

The R's connected by a dash apply to the same rest and should be counted in a continuous sound.

STUDENT ASSIGNMENT

Date	_____
Grade	_____

- Practice counting the following exercise aloud while tapping your foot evenly and steadily. Don't forget about the dash between the R's.

- Write the beats under each note and rest in the following exercise.

- How many half rests equal a whole rest? _____
- How many quarter rests equal a whole rest? _____
- How many quarter rests equal a half rest? _____

MEMORIZE: A whole rest equals a whole note. A half rest equals a half note.
A quarter rest equals a quarter note.

DOTTED NOTES

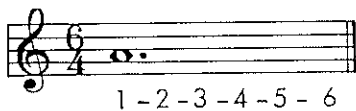
A Dot (•) may be added to any note used in music. The Dot (•) is equal to one-half the value of the note it follows.

Example:-

A whole note (♩) receives 4 beats. The dot (•) half of this or 2 beats.
The two together receive 6 beats (♩• = 1-2-3-4-5-6).

A half note (♮) receives 2 beats. The dot (•) half of this or 1 beat.
The two together receive 3 beats (♮• = 1-2-3).

The beats under the dotted notes may be written like this:-



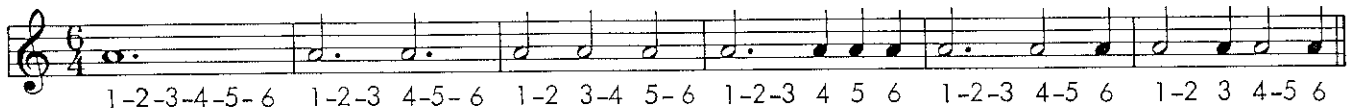
STUDENT ASSIGNMENT

Date _____
Grade _____

1. How many half notes equal one dotted whole note? _____

2. How many quarter notes equal one dotted half note? _____

3. Practice counting the following exercise aloud while tapping your foot evenly and steadily. Don't forget the dash between the numbers and rests.



4. Write the beats under each note and rest in the following exercise.



MEMORIZE: A dot after any note is equal to one half the value of the note it follows.

LEGER LINES

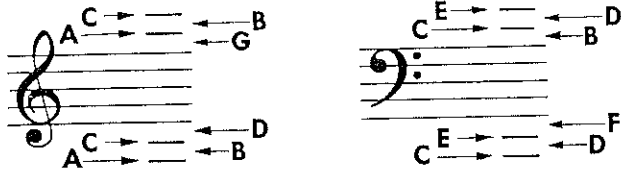
Leger lines are very short lines added above or below the staff. Notes may be written on these leger lines or in the spaces between the lines.

This note is one leger line above the staff  two lines above 


This note is one space above the staff  two spaces above 

This note is one leger line below the staff  two lines below 

This note is one space below the staff  two spaces below 

The names of these added lines and spaces are:- 




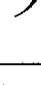
Below are all the notes that you have learned so far.



STUDENT ASSIGNMENT

Date _____

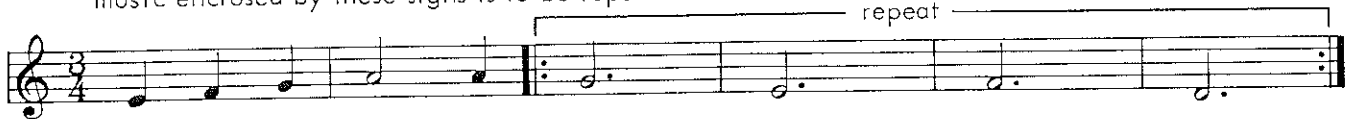
Grade _____

1. What are the letter names of the first four notes above the  staff? _____
2. What are the letter names of the first four notes below the  staff? _____
3. What are the letter names of the first four notes above the  staff? _____
4. What are the letter names of the first four notes below the  staff? _____

MEMORIZE: The names of all leger lines and spaces above and below the staff as shown here in both treble clef and bass clef.

THE REPEAT SIGN FIRST and SECOND ENDINGS

A repeat sign consists of two dots placed before or after a double bar. It indicates that the music enclosed by these signs is to be repeated.



Sometimes this same sign means to go back to the beginning of that particular strain, like this:-

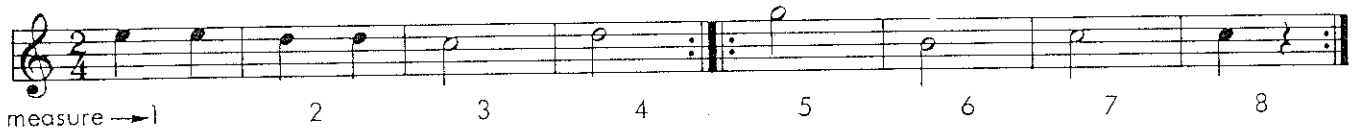


A repeated strain is often marked with a first and second ending. In this case play the 1st ending the first time - repeat the strain then skip the 1st ending and play the 2nd ending.

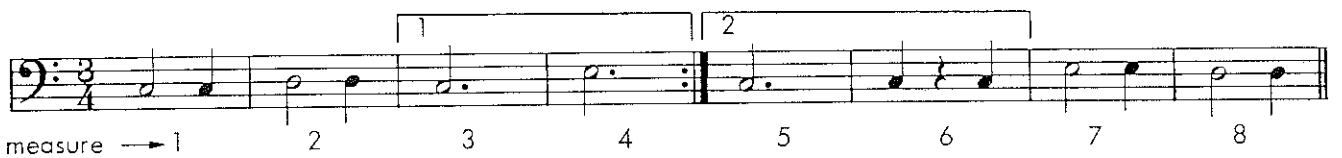


STUDENT ASSIGNMENT

Date _____
Grade _____





- measure → 1 2 3 4 5 6 7 8
1. Which measure is played after measure 4 is played the first time? _____
 2. Which measure is played before measure 5 is played the second time? _____



- measure → 1 2 3 4 5 6 7 8
1. Which measure is played after measure number 4? _____
 2. Which measure is played before measure number 5? _____

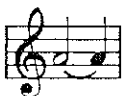


MEMORIZE: Play the 1st ending the 1st time, repeat, skip the 1st ending the second time and play the 2nd ending.

THE TIE

A curved line ( or ) connecting two or more notes on the same line or space is called a tie. The following examples are ties with the beats written below.

Ties can also cross a bar line joining a note in one measure to a note in the next measure, like the following example:-







Always think of holding the first note through all of the notes that are tied together.

Example:- This tone  is held for 3 beats - this one  is held for 2 beats-
and this one  is held for 4 beats.

STUDENT ASSIGNMENT

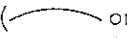

Date	_____
Grade	_____

With a time signature of $\frac{4}{4}$:-

- How many beats will this tone  receive? _____
- How many beats will this tone  receive? _____
- How many beats will this tone  receive? _____
- How many beats will this tone  receive? _____
- How many beats will this tone  receive? _____
- How many beats will this tone  receive? _____
- Write the beats under each note and rest in the following exercise.

MEMORIZE: Tied notes are always on the same line or space.

THE SLUR

A curved line ( or ) connecting two or more notes on different lines or spaces is called a slur. The following examples are slurs with the beats written below.

1-2-3-4 1-2-3-4 1-2-3-4 1-2-3-4 1 2 3 4 1-2-3-4 1 2 3 4 1-2-3 R

Notice that slurs can also cross bar lines.

Think of playing as smooth as possible, without any stop or interruption between any of the notes within a slur.

1-2-3 1-2-3 1-2-3 1-2-3 1 2 3 1 2 3 1-2-3 1-2-3 1-2-3 - 1 R R

Remember—the dash between numbers means to count with a continuous sound.

STUDENT ASSIGNMENT

Date	_____
Grade	_____

1. A curved line used to connect notes on different lines or spaces is called a _____ .
2. A curved line used to connect notes on the same line or space is called a _____ .
3. In the song "Long, Long Ago" (below) how many slurs are used? _____
4. In the song "Long, Long Ago" how many ties are used? _____
5. Write the beats under each note and rest in "Long, Long Ago".

Long, Long Ago

MEMORIZE: Slurred notes are always on different lines and spaces.

EIGHTH NOTES

Add a flag to the stem of a quarter note (♩) and it becomes an eighth note (♪).

Two eighth notes equal one quarter note: - ♪ ♪ = ♩

Whenever a quarter note is equal to one beat (as in $\frac{2}{4}$ $\frac{3}{4}$ $\frac{4}{4}$ time)

an eighth note is equal to one-half of a beat.

$$\begin{array}{c} \text{♩} = \text{♪} + \text{♪} \\ \text{beat} \rightarrow 1 = \frac{1}{2} + \frac{1}{2} \end{array}$$

When two or more eighth notes are next to one another like this: - ♪ ♪ ♪ ♪ they may be written like this: - ♪♪ ♪♪ or like this: - ♪♪♪♪

The beats under the eighth notes may be written like this: -

Arrows show direction of foot beat

STUDENT ASSIGNMENT

Date	_____
Grade	_____

1. In the staff below put four eighth notes and one quarter note in the first measure.
2. Put six eighth notes in the second measure.
3. Put a quarter note and four eighth notes in the third measure.
4. Put two eighth notes, one quarter note and two eighth notes in the fourth measure.

5. Write the beats under each note that you have just written.

MEMORIZE: Tap your foot "down" on the beat and "up" on the an (never down on the an).

EIGHTH RESTS

The eighth rest also has one flag. These are eighth rests ♪ ♪ ♪ ♪

Two eighth rests equal one quarter rest: - ♪ ♪ = ♩

Whenever a quarter rest is equal to one beat (as in $\frac{2}{4}$ $\frac{3}{4}$ $\frac{4}{4}$ time)

an eighth rest is equal to one-half of a beat.

$$\begin{aligned} \text{♩} &= \text{♪} + \text{♪} \\ \text{beat} \rightarrow 1 &= \frac{1}{2} + \frac{1}{2} \end{aligned}$$

The beats under these eighth notes and eighth rests may be written like this:-

Arrows show direction of foot beat

STUDENT ASSIGNMENT

Date	_____
Grade	_____

- In the staff below fill in the first measure with as many ♪ ♪ as needed.
- Fill in the second measure with as many ♪ ♪ ♪ as needed.
- Fill in the third measure with as many ♪ ♪ ♪ as needed.
- Fill in the fourth measure with as many ♪ ♪ ♪ ♪ as needed.

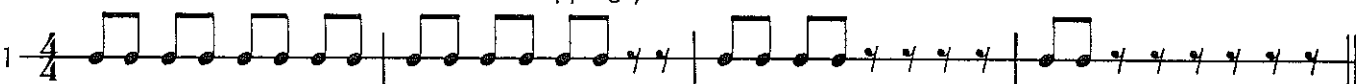
- Write the beats under each note and rest that you have just written.

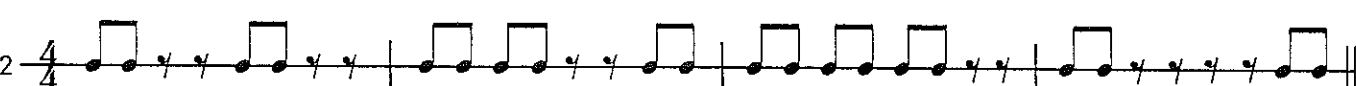
MEMORIZE: Whenever a quarter note or a quarter rest equals one beat-
an eighth note or an eighth rest equals one-half beat.


STUDENT ASSIGNMENT

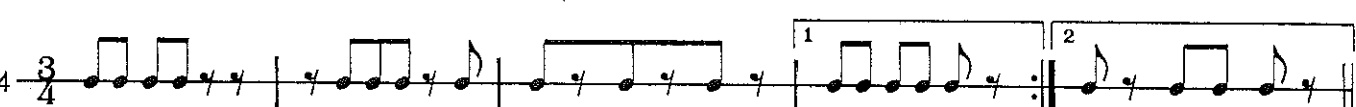
Date	_____
Grade	_____

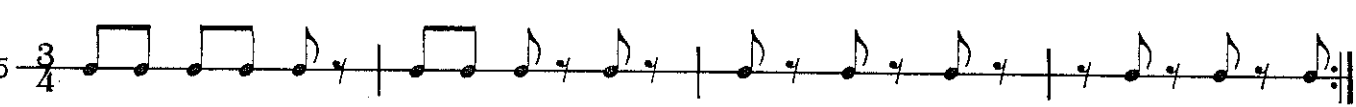
Write the beats under each note and rest in Ex.1 through 10.
Then count the time aloud while tapping your foot.

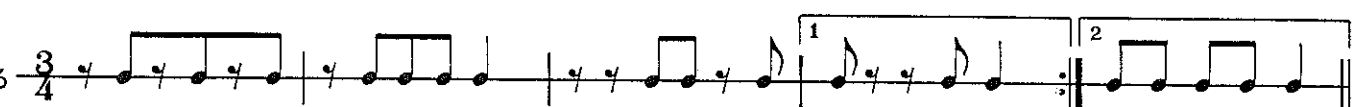
1 $\frac{4}{4}$ 

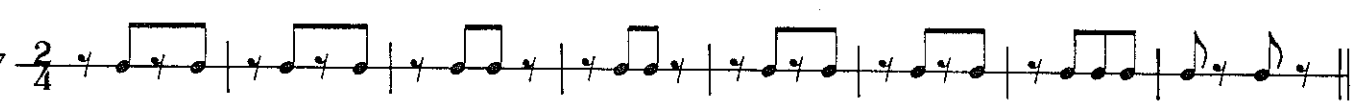
2 $\frac{4}{4}$ 

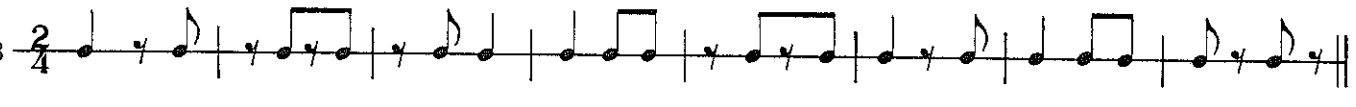
3 $\frac{4}{4}$ 

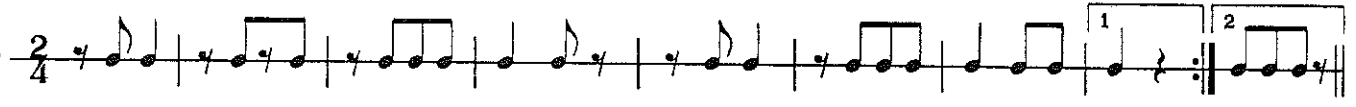
4 $\frac{3}{4}$ 

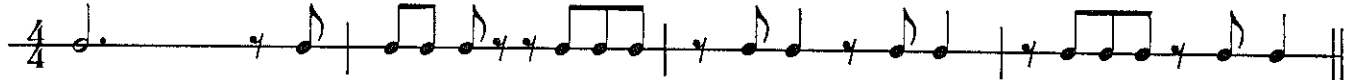
5 $\frac{3}{4}$ 

6 $\frac{3}{4}$ 

7 $\frac{2}{4}$ 

8 $\frac{2}{4}$ 

9 $\frac{2}{4}$ 

10 $\frac{4}{4}$ 

DOTTED QUARTER NOTES

In Lesson 13 we learned that - a dot placed after any note is equal to one-half the value of the note it follows.

Therefore:- Whenever a quarter note receives one beat (as in $\frac{2}{4}$ $\frac{3}{4}$ $\frac{4}{4}$ time) a dotted quarter note receives one and a half beats.

A quarter note (♩) receives 1 beat. The dot (•) half of this or $\frac{1}{2}$ beat.

The two together (♩.) receive $1\frac{1}{2}$ beats.

Or:- Since a quarter note is equal to two eighth notes (♩ = ♪ ♪) a dotted quarter note is equal to three eighth notes (♩. = ♪ ♪ ♪).

The beats under the dotted quarter notes may be written like this:-

STUDENT ASSIGNMENT

Date _____

Grade _____

1. How many eighth notes equal one dotted quarter note? _____
2. If the time signature is $\frac{4}{4}$, how many beats does a dotted quarter note receive? _____
3. Write the beats under each note and rest in the following exercises.

MEMORIZE: A dotted quarter note equals three eighth notes. Whenever a quarter note receives one beat, a dotted quarter note receives a beat and a half.

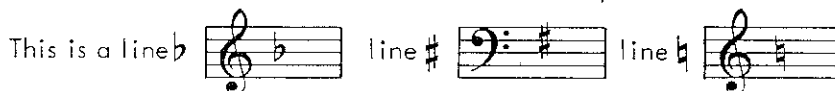
THE FLAT - SHARP - NATURAL

\flat is called a flat

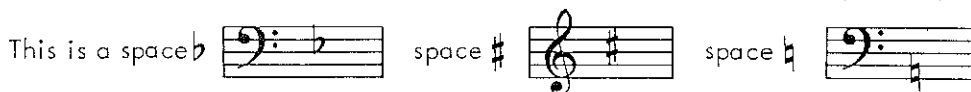
\sharp is called a sharp

\natural is called a natural

A flat (\flat) lowers the pitch, or sound, of a note one-half step. A sharp (\sharp) raises the pitch, or sound, of a note one-half step. A natural (\natural) cancels the effect of a flat or sharp.

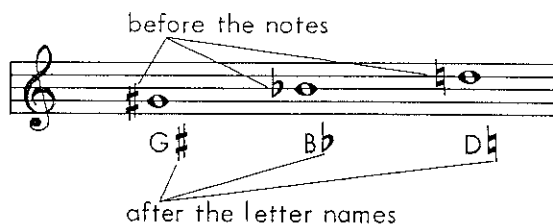


Notice that the staff line goes through the center of the \flat \sharp \natural



Notice that the center of the \flat , \sharp , \natural is completely in the space \flat \sharp \natural

We always speak of the flat, sharp or natural after the note; such as A flat, C sharp, B natural; but we put the signs before the notes when we write music on the staff.



STUDENT ASSIGNMENT

Date _____

Grade _____

1. How many half steps are there between B and $B\flat$? _____
2. How many half steps are there between F and $F\sharp$? _____
3. How many half steps are there between $E\flat$ and $E\natural$? _____
4. How many half steps are there between $C\sharp$ and $C\natural$? _____
5. How many half steps are there between $A\flat$ and $A\sharp$? _____

MEMORIZE: A flat lowers the pitch of a note one-half step. A sharp raises the pitch of a note one-half step. A natural cancels a flat or sharp.

ACCIDENTALS

A flat, sharp or natural sign placed before a note is called an Accidental. When one of these accidental signs is placed before a note, every note which follows on the same line or space within that same measure is also affected.

Bb Bb Bb C# C# C# F F F# F# G Ab G Ab

A natural sign is used to cancel a sharp or flat within a measure.

Bb Bn C D C# Cn Bb Eb F En F G Ab An Bb

A bar line cancels any accidental which appears in the previous measure, except in the case of notes tied across a bar line.

C Ab G Bb B G A F# F# E Eb D C E F

STUDENT ASSIGNMENT

Date	_____
Grade	_____

1. Flat, sharp and natural signs are called _____.
2. Accidentals affect all notes which follow on the same line or space within a _____.
3. Except when the notes are tied, the effect of an accidental never crosses a _____.
4. Write the letter name under each note in the following exercise.

Bb

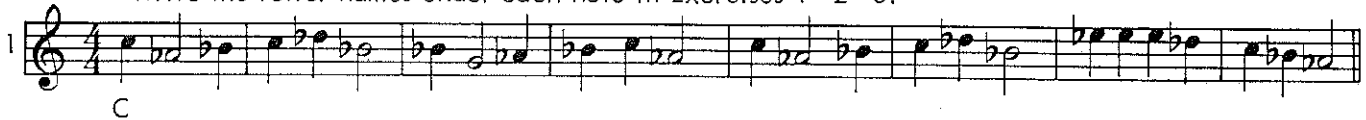
MEMORIZE: Whenever an accidental appears in a measure, it affects all of the remaining notes on the same line or space in that one measure. It is cancelled by the next bar line, except when the notes are tied across the bar line.

STUDENT ASSIGNMENT

Date _____

Grade _____

Write the letter names under each note in Exercises 1 - 2 - 3.

1 

C

2 

A

3 

A#

In Exercises 4 - 5 - 6 place a half note on the correct line or space above each letter. Don't forget the accidental signs.

4 

Ab Ab Bb C Db C Bb Ab G Eb F G Ab C Ab ♯ ♯

5 

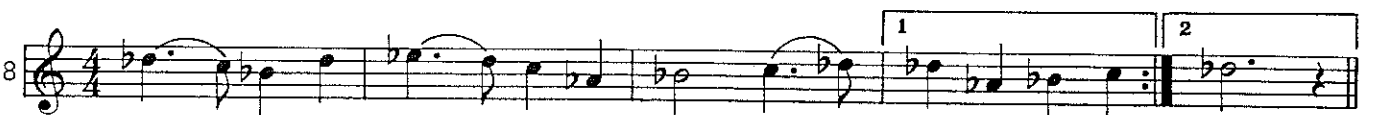
F# G# A B D# D# D# B C# B A F# E G# E ♯ ♯

6 

Eb G Bb Eb D B G# F D F Bb Ab G F Eb ♯ ♯

Write the beats under each note and rest in Exercise 7 and 8. Count - Tap - Sing.

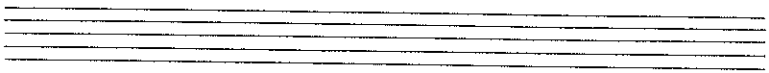
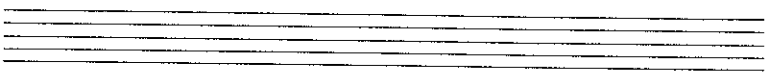

7 

8 

STUDENT TEST

Date _____

Grade _____

- Lesson 1
1. There are ___ lines and ___ spaces in the music staff.
 2. The bottom line of the staff is line number ___.
 3. The first space down from the top of the staff is space number ___.
- Lesson 2
1. The treble clef sign is also called the _____ clef sign.
 2. The bass clef sign is also called the _____ clef sign.
 3. The treble clef names the second line ___; the bass clef names the fourth line ___.
- Lesson 3
1. The letters of the alphabet used in naming the notes are _ _ _ _ _ .
 2. The letter names of the treble clef lines are _ _ _ _ _ , treble clef spaces _ _ _ _ _ .
 3. The letter names of the bass clef lines are _ _ _ _ _ , bass clef spaces _ _ _ _ _ .
- Lesson 4
1. Can you say ABCDEFG backwards by memory? Yes _____ No _____ .
 2. Draw six line whole notes. 
 3. Draw six space whole notes. 
- Lesson 5
1. The stems go _____ for all notes below the third line of the staff.
 2. The stems go _____ for all notes on or above the third line of the staff.
 3. Stems pointing down are always attached to the _____ side of the note.
- Lesson 7
1. A _____ is the distance between two bar lines.
 2. A double bar means the _____ of that part of the music.
 3. Divide the following staff into four measures. 
- Lesson 8
1. We call the numbers $\frac{2}{4}$ $\frac{3}{4}$ $\frac{4}{4}$ etc. at the beginning of music the _____ signatures.
 2. We can tell the number of beats in each measure by the _____ number.
 3. We can tell the kind of a note that gets one beat by the _____ number.
- Lesson 9
1. The quarter note receives _____ beat when the lower number of the time signature is a 4 .
 2. The half note receives _____ beats when the lower number of the time signature is a 4 .
 3. The whole note receives _____ beats when the lower number of the time signature is a 4 .
- Lesson 11
1. A whole note equals _____ half rests.
 2. A whole note equals _____ quarter rests.
 3. A whole note equals _____ whole rest .

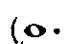
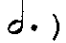
Lesson 30 (Continued)

STUDENT TEST

Date _____

Grade _____

Lesson 13 1. A dot after a note is equal to _____ the value of the note it follows.

2. In $\frac{6}{4}$ a dotted whole note () receives _____ beats.3. In $\frac{4}{4}$ a dotted half note () receives _____ beats.

Lesson 15 1. Added lines above or below the staff are called _____ lines.

2. In the treble clef the second leger line above the staff is _____.

3. In the bass clef the second leger line above the staff is _____.

Lesson 17 1. When two dots are placed before a double bar we call it a _____ sign.

2. When you come to a repeat sign you go back to the last _____ sign or to the _____.

3. Play the 1st ending - repeat-_____ the 1st ending and play the _____ ending.

Lesson 18 1. Tied notes are always on the same _____ or _____.

2. Ties can also cross _____ lines to join notes in adjacent measures.

3. A dotted half note tied to a _____ note equals four beats.

Lesson 19 1. Slurred notes are always on different _____ and _____.

2. Slurs can also cross _____ lines.

3. Slurred notes are always played in a _____ or continuous sound.

Lesson 21 1. One quarter note equals _____ eighth notes.

2. It takes _____ eighth notes to equal one whole note.

3. Never beat your foot _____ on "an" when counting time.

Lesson 23 1. One quarter rest equals _____ eighth rests.

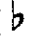


2. One eighth rest equals _____ beat.

3. One half rest equals _____ eighth rests.

Lesson 25 1. In $\frac{2}{4}$ $\frac{3}{4}$ or $\frac{4}{4}$ a dotted quarter note receives _____ beats.

2. A dotted quarter note equals _____ eighth notes.

3. A dotted quarter note is usually followed by an _____ note.

Lesson 27 1. A flat () _____ the pitch or sound of a note _____ step.2. A sharp () _____ the pitch or sound of a note _____ step.3. A natural () _____ the effect of a flat or sharp.

Lesson 28 1. Flat, sharp and natural signs are called _____.

2. An accidental affects all notes on the same line or space in that one _____.

3. The effect of an accidental never crosses a bar line except when the notes are _____.

THE KEY SIGNATURE

Sharps and flats immediately following the clef sign are called the key signature. These accidentals effect every note on the line or space which they represent throughout the entire piece of music unless they are cancelled by a natural sign (♮) or a change to another key.

In the following example, every note called F is now raised one half-step to F# because a sharp is placed on the F line in the key signature.

G A B C D E F# G

In the following example all notes called B - E - A are now lowered one half-step to Bb - Eb - Ab because flats have been placed on the B line, E space, and A space in the key signature.

Eb F G Ab Bb C D Eb F G Ab Bb C D Eb

STUDENT ASSIGNMENT

Date _____
Grade _____

1. What notes are sharp in this key? _____
2. What notes are flat in this key? _____
3. Study the key signature and name the notes in the following example.

E

MEMORIZE: Flats or sharps in a key signature effect every note on the line or space which they represent unless cancelled by a natural sign.

STUDENT ASSIGNMENT

Date _____

Grade _____

Circle and write the names of the notes effected by the key signature in Exercises 1, 2, and 3.
Count aloud as you tap your foot for each beat - then sing with syllables.

1

2

3

Complete writing the beats under each note and rest in Exercises 4 & 5. Count - Tap - Sing.

4

1 an 2 R 4 1 2 3-4
(R=Rest)

5

1 - 2 an R 2

Write the letter names under each note in Exercises 6, 7, and 8.

6

D

7

Bb

8

B

THE FLAT KEYS

Every key signature has a name. When there are no sharps or flats in the key signature we call it the natural key, or key of C. To find the name of any key signature containing flats, count down four letters beginning with the last flat. The last flat is the one farthest to the right. When two or more flats are in the key signature, the flat before the last flat is the name of the key. This is a short cut that will prove very helpful.

THE FLAT KEYS



One flat - Key of F



Five flats - Key of Db



Two flats - Key of Bb



Six flats - Key of Gb



Three flats - Key of Eb



Seven flats - Key of Cb



Four flats - Key of Ab

STUDENT ASSIGNMENT

Date _____

Grade _____

1. No sharps or flats in the key signature is the key of _____.
2. Four letters below Ab will be the key of _____.
3. In the key of Ab the following notes are always played flat _____.
4. When all B - E - A - D - G and C's are flat, the key is _____.

MEMORIZE: The seven flat key signatures, and the notes that are flat in each key.

THE SHARP KEYS

To find the name of any key signature containing sharps, count up to the next line or space above the last sharp. The last sharp is the one farthest to the right. Whenever the line or space above the last sharp contains a sharp in the signature, then the word "sharp" is used with the letter name.

THE SHARP KEYS



One sharp - Key of G



Five sharps - Key of B



Two sharps - Key of D



Six Sharps - Key of F#



Three sharps - Key of A



Seven sharps - Key of C#



Four sharps - Key of E

STUDENT ASSIGNMENT

Date _____

Grade _____

1. If the last sharp is G, the key signature is _____.
2. In the key of D the following notes are always played sharp _____.
3. When all F - C - G - D and A's are sharp, the key signature is _____.
4. Name all notes that are sharp in the key of F# _____.

MEMORIZE: The seven sharp key signatures, and the notes that are sharp in each key.

SIXTEENTH NOTES

Add two flags to the stem of a quarter note (♩) and it becomes a sixteenth note (♫). Two sixteenth notes equal one eighth note: ♫ ♫ = ♪; therefore, four sixteenth notes equal one quarter note: ♫ ♫ ♫ ♫ = ♩. Whenever a quarter note is equal to one beat (as in $\frac{2}{4}$ - $\frac{3}{4}$ - $\frac{4}{4}$ time), a sixteenth note is equal to one-fourth of a beat.

$$\begin{array}{c} \text{♩} = \text{♫} + \text{♫} + \text{♫} + \text{♫} \\ \text{beat} \rightarrow 1 = \frac{1}{4} + \frac{1}{4} + \frac{1}{4} + \frac{1}{4} \end{array}$$

When two or more sixteenth notes are next to one another like this: ♫ ♫ ♫ ♫ they may be written like this: ♫♫ ♫♫ or like this: ♫♫♫♫

The beats under the sixteenth notes may be written like this:-

Arrows show direction of foot beat. (Hold foot in place on dash)

STUDENT ASSIGNMENT

Date	_____
Grade	_____

1. On the staff below write four sixteenth notes and one quarter note in the first measure.
2. Write two eighth notes and four sixteenth notes in the second measure.
3. Write four sixteenth notes and two eighth notes in the third measure.
4. Write eight sixteenth notes in the fourth measure.

5. Write the beats under each note that you have placed on the staff.

MEMORIZE: Tap your foot "down" on the beat numbers and "up" on the an.
(Never down on e - an - da.)

STUDENT ASSIGNMENT

Date	_____
Grade	_____

Write the beats under each note and rest in Ex.1 through 4.
Then count the time aloud while tapping your foot.

1 $\frac{4}{4}$

2 $\frac{3}{4}$

3 $\frac{2}{4}$

4 $\frac{4}{4}$

Write the notes and rests represented by the beats below the line in Ex.5 through 8.
Then count the time aloud while tapping your foot.

5 $\frac{4}{4}$
1 - 2 R 4 | 1 an 2 3 an 4 | 1 R R 4 | 1 2 an 3 R

6 $\frac{3}{4}$
1 - 2 3 | 1 2 an 3 | 1 e an da 2 R | 1 2 e an da 3 R

7 $\frac{2}{4}$
1 R 2 R | 1 an 2 R | 1 e an da 2 an | R an 2 R

8 $\frac{4}{4}$
R 2 an 3 R | 1 e an da 2 R R | 1 R 2 R 3 - 4 | 1 2 e an da 3 R

SIXTEENTH RESTS

The sixteenth rest also has two flags. These are sixteenth rests: $\text{♩} \text{♩} \text{♩} \text{♩}$ Two sixteenth rests equal one eighth rest: $\text{♩} \text{♩} = \text{♩}$ Therefore, four sixteenth rests equal one quarter rest: $\text{♩} \text{♩} \text{♩} \text{♩} = \text{♩}$ Whenever a quarter rest is equal to one beat (as in $\frac{2}{4} - \frac{3}{4} - \frac{4}{4}$ time) a sixteenth rest is equal to one-fourth of a beat.

$$\text{♩} = \text{♩} + \text{♩} + \text{♩} + \text{♩}$$

$$\text{beat} \rightarrow 1 = \frac{1}{4} + \frac{1}{4} + \frac{1}{4} + \frac{1}{4}$$

The beats under these sixteenth notes and sixteenth rests may be written like this:-

The first staff (treble clef, 2/4 time) shows a sequence of notes and rests: quarter note, eighth note, eighth rest, quarter note, eighth note, eighth rest, quarter note. Below it are the rhythmic patterns: 1 e an R 2 R. Arrows indicate foot beat directions: down for the first eighth note, up for the eighth rest, down for the second eighth note, and up for the second eighth rest.

The second staff (bass clef, 2/4 time) shows a sequence of notes and rests: quarter note, eighth note, eighth rest, quarter note, eighth note, eighth rest, quarter note. Below it are the rhythmic patterns: R e anda R an.

The third staff (treble clef, 4/4 time) shows a sequence of notes and rests: quarter note, eighth note, eighth rest, quarter note, eighth note, eighth rest, quarter note, eighth note, eighth rest, quarter note. Below it are the rhythmic patterns: 1 R an da 2 R 3 e R da 4.

Arrows show direction of foot beat. (Hold foot in place on dash.)

STUDENT ASSIGNMENT

Date	_____
Grade	_____

- On the staff below fill in the first measure with as many $\text{♩} \text{♩} \text{♩}$ as needed.
- Fill in the second measure with as many $\text{♩} \text{♩} \text{♩}$ as needed.
- Fill in the third measure with as many $\text{♩} \text{♩} \text{♩}$ as needed.
- Fill in the fourth measure with as many $\text{♩} \text{♩} \text{♩}$ as needed.

- Write the beats under each note and rest that you have placed on the staff.

MEMORIZE: Whenever a quarter note or a quarter rest equals one beat, a sixteenth note or a sixteenth rest equals one-fourth beat.

STUDENT ASSIGNMENT

Date	_____
Grade	_____

Write the beats under each note in Ex.1 through 4.
Then count the time aloud while tapping your foot.

1 $\frac{2}{4}$

2 $\frac{3}{4}$

3 $\frac{2}{4}$

4 $\frac{3}{4}$

Write the notes and rests represented by the beats below the line in Ex.5 through 8.
Then count the time aloud while tapping your foot.

5 $\frac{2}{4}$ _____
R an R an R e an da 2 R 1 R 2 R R an da 2 an

6 $\frac{3}{4}$ _____
1 R 2 R 3 an 1 e R da 2 an 3 1 an da 2 3 e R da R e an da 2 R

7 $\frac{2}{4}$ _____
1 R R an R an da R an da 1 e R da 2 an 1 e R da 2

8 $\frac{3}{4}$ _____
R e an da 2 3 1 an 2 R an da 3 R 1 e R da 2 an 3 R an da 2 an da 3

DOTTED EIGHTH NOTES

In Lessons 13 and 25 in Book One we learned that a dot placed after any note is equal to one-half the value of the note it follows. Therefore: whenever an eighth note receives one-half beat (as in $\frac{2}{4}$ - $\frac{3}{4}$ - $\frac{4}{4}$ time) a dotted eighth note receives three-quarters of a beat. An eighth note (♩) receives $\frac{1}{2}$ beat. The dot (·) half of this or $\frac{1}{4}$ beat. The two together receive $\frac{3}{4}$ of a beat. Or: since an eighth note is equal to two sixteenth notes (♩ = ♪♪) a dotted eighth note is equal to three sixteenth notes (♩. = ♪♪♪).

The beats under the dotted eighth notes may be written like this:

1 da 2 1 da 2 da 3 1 da 2 R 3 da R da

STUDENT ASSIGNMENT

Date _____
Grade _____

1. How many sixteenth notes equal one dotted eighth note? _____
2. If the time signature is $\frac{4}{4}$, how much of a beat does a dotted eighth note receive? _____
3. Write the beats under each note and rest in the following exercises.

MEMORIZE: A dotted eighth note equals three sixteenth notes. Whenever an eighth note receives one-half beat a dotted eighth note receives three-fourths of a beat.